

# MSD EARLY RESPONSE TEAM

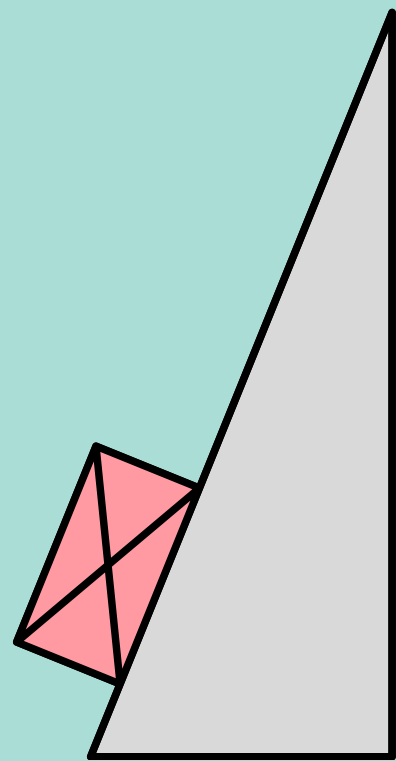
## RETENTION



If workers need help with essential costs, we may be able to help. You don't need to be on a benefit to access an eligibility check, we have some assistance options available to workers on lower wages or those who have had their work hours limited. We could help with:

- food
- accommodation costs (rent, mortgage, board)
- power, gas and water bills or heating
- medical and dental costs.

## RETRAINING



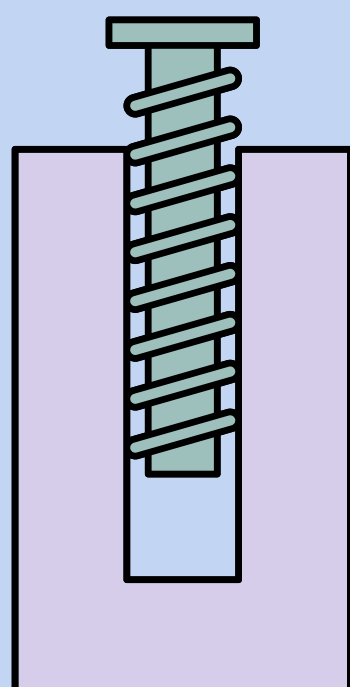
Workers and their employers may be interested in upskilling opportunities to increase skills in the workplace. We provide access to a range of MSD services:

- Flexi-wage support to retain and re-skill employees
- Mana in Mahi funding for those interested in an apprenticeship

Some tertiary institutes have reduced or waived their fees and some courses are available online:

- Workplace Literacy and Numeracy (WLN)
- Fees Free

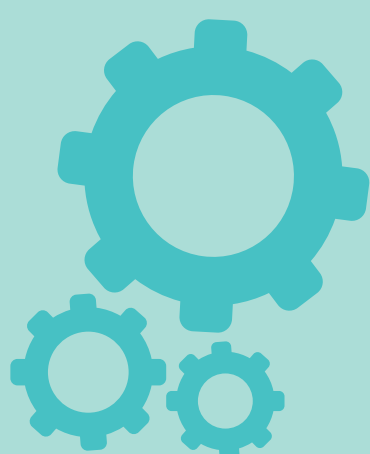
## REDEPLOYMENT



This service utilises a proactive approach with employers, focusing on how MSD can be involved earlier to help people at risk of job loss.

We are able to tailor support to meet employers and employees requirements and needs:

- Connecting staff at risk of job loss directly to other employment or training
- CVs and Career advice
- Job Expos to link those affected directly with employers



## WORKING WITH US

To find out more about how we can help you:

[Auckland\\_Early\\_Response@msd.govt.nz](mailto:Auckland_Early_Response@msd.govt.nz)